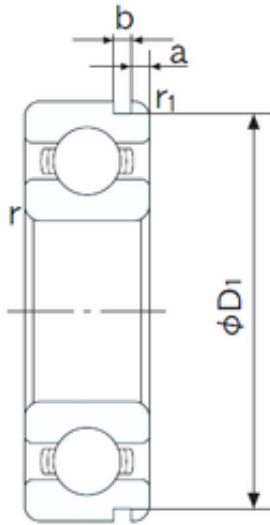




NKE-Corredor de energia.



55 mm x 100 mm x 21 mm NACHI 6211N Rolamentos de esferas profundas

Bearing No. 6211N

Size	55x100x21 mm
Bore Diameter	55 mm
Outer Diameter	100 mm
Width	21 mm
d	55 mm
D	100 mm
B	21 mm
C	21 mm
a	3.28 mm
b	2.7 mm
r min.	1.5 mm
r1 min.	0.5 mm
D1	96.8 mm
Weight	0.607 Kg
Basic dynamic load rating (C)	43,5 kN
Basic static load rating (C0)	29,3 kN
(Grease) Lubrication Speed	6300 r/min
Bore Type	Cylindrical Bore
Enclosure	Open
Configuration	Single Row
Bore Size	55 mm
Outside Diameter	100 mm
Width	21 mm
Fillet Radius/Chamfer	1.5 mm
r1	0.5 mm

6211N Bearing 2D drawings and 3D CAD models



NKE-Corredor de energia.

Groove Width	2.7 mm
Groove Diameter	96.8 mm
a (max)	3.3 mm
Dynamic Load Rating	43,500 N
Static Load Rating	29,300 N
Limiting Speed - Grease	6,400 rpm
Limiting Speed - Oil	7,700 rpm
Factor fo	14.4
Radial Clearance	0.008 to 0.028 mm
da (min)	64 mm
Da (max)	91 mm
Dx (min)	108 mm
ra (max)	1.5 mm
Cy (max)	5.4 mm